

CTM 5G 超越無限

CTM 5G

全新角度

迎接 5G 新時代

收費指南

CTM 澳門電訊

CTM 5G 無限數據任用

5G 本地月費計劃 <sup>ⓐ</sup>	\$178	\$238	\$338	\$438
免費本地數據	無限任用			
全速數據	15GB	30GB	60GB	100GB
免費本地話音通話時間 (分鐘)	500		1,000	
額外本地話音通話收費 (分鐘)	\$0.25			
免費本地短訊用量	100			
額外本地短訊 / 多媒體訊息收費 (每個)	\$0.25			
免費 CTM Wi-Fi	無限任用			
免費增值服務	- 來電號碼顯示服務 - 特備功能服務*			

5G 中國內地、澳門、香港月費計劃 <sup>ⓐ</sup>	\$368	\$468	\$568	\$668	\$868
免費三地共享數據	無限任用				
全速數據	30GB	60GB	100GB	150GB	300GB
免費三地共享話音通話時間 (分鐘)	500	500	1,000	1,000	1,000
額外三地共享話音通話收費 (分鐘)	\$0.25				
免費三地共享短訊用量	100				
額外三地共享短訊 / 多媒體訊息收費 (每個)	\$0.25				
免費 CTM Wi-Fi	無限任用				
免費增值服務	- 來電號碼顯示服務 - 特備功能服務*				

5G 額外每月全速數據計劃	\$50	5G 按次全速數據計劃	\$13	\$120	\$300
全速數據	10GB	全速數據 (有效期至當月賬單截數日)	1GB	10GB	30GB

<sup>ⓐ</sup> 於發單月內，當客戶所使用之累積流動數據用量超過全速數據上限，數據傳輸速度 (上載及下載) 將被限制至不低於 1Mbps。實際數據傳輸速度受多種因素影響，包括您的網絡連接、地點、您使用的裝置、同時共用人數以及您所訪問的網站。  
<sup>\*</sup> 特備功能服務包括：所有來電轉接服務，來電待接服務及所有來電上鎖。客戶需另行設定。  
<sup>^</sup> 「5G 升級計劃」不適用於 4G+ 數據任用月費計劃之客戶。客戶在申請此服務後，每當所享有的數據用量剩餘少於 2GB、1GB 及 100MB 時，客戶將會收到一個自動短訊提醒。當您所享有的數據已使用完畢，系統亦會自動發出短訊提示，額外的數據用量將會以 \$0.012695/MB 收費，默認收費單位為 1MB，因而即使消耗少於 1MB，客戶仍將被收取 1MB 的費用，本地流動數據用量收費上限為 \$600，並只適用於本地流動數據額外用量收費 (流動數據服務月費、CTM Wi-Fi 用量及漫遊數據除外)。當觸及此收費上限時，數據傳輸速度將被限制至不低於 1Mbps。而本地數據用量先使用您在「按次數據用量計劃」中所享之數據用量，再使用「額外每月數據用量計劃」中之數據用量，最後才使用「基本月費計劃」中之用量。

註：  
 - 「全速數據」使用次序為：先使用您在「按次全速數據計劃」中所享之數據，再使用「額外每月全速數據計劃」中之數據，最後才使用「基本月費計劃」中之數據。  
 - 「中國內地、澳門、香港月費計劃」將在翌日晚上 8 時後啟動服務。客戶於香港須選用「中國移動香港」、「CSL」、「SmarTone HK」或「3 Hong Kong」，於中國內地則須選用之數據將計入其計劃內相關之免費共用數據內，故此客戶於相關地區將不適用任何漫遊數據組合服務。(建議客戶手動選擇網絡，否則客戶可能須就其選定的流動電話服務從攤商而支付額外的漫遊費用。)  
 - 當您透過流動裝置使用數據服務時，代表您正在使用您所享有的數據。當您查詢剩餘數據時，正在使用中的數據用量並不包括在內，所顯示的訊息會與您實際享有的數據有所差別。  
 - 國際短訊每個為 \$1，國際多媒體訊息每個為 \$3。一條短訊少於或等於 70 個非英文 / 160 個英文字元，當超過 70 個非英文 / 160 個英文字元，將自動拆分為多條短訊。  
 - 重發 Wi-Fi 密碼：客戶可透過服務第一熱線 1000 或 CTM Buddy App。更改 Wi-Fi 密碼：客戶可透過 CTM Buddy App。  
 - 根據第 15 / 2002 號行政法規《電信碼號資源的管理及分配》第二條第二款的規定，碼號資源屬不可移轉的資源，因此無法提供流動電話號碼轉名服務。  
 - 以 CTM 的可接受使用政策 (AUP) 為準。  
 - 所有價格以澳門幣計算。

5G 升級計劃 <sup>^</sup>	\$88/月
額外用量收費 (每 GB)	\$13

5G 額外每月數據用量計劃	\$50
免費本地數據用量	10GB

5G 按次數據用量計劃	\$13	\$120	\$300
免費本地數據用量 (有效期至當月賬單截數日)	1GB	10GB	30GB

按金

服務類別	本澳居民	非本澳居民
本地電話服務	-	\$500
IDD 直通國際長途電話服務及自動跨域通訊服務	\$500	\$1,000

註：所有按金將於客戶取消服務並已繳清所有有關費用時原銀奉還。

其他服務收費

智能卡 - 首次啟動	\$150
- 首次遺失補發 (每一年內) <sup>*</sup>	免費
- 再次遺失補發	\$50
更改服務計劃	免費
更改電話號碼	\$25
暫停服務手續費 <sup>**</sup> (每次)	\$30
流動電話詳細賬單 (每次)	\$20
重新按啟	\$80
特別電話號碼 <sup>**</sup>	\$2,000

\* 「一年內」之計算方法是以每年 1 月 1 日至 12 月 31 日。

\*\* 由第一次暫停流動電話服務申請日起計之一年內，客戶可一次或多次申請重開或暫時停止使用服務，倘若要求暫停服務之合共日數相等於或少於 90 日，其所選之服務計劃月費將暫停收取。倘若要求暫停服務之合共日數多於 90 日，則其後之時間仍須繳付其所選之服務計劃月費。

\*\* 其客戶如選用同一的特別電話號碼來重開流動電話，需重新繳付 \$2,000 之特別電話號碼費用。

申請更改流動電話服務計劃的途徑：

- CTM Buddy 應用程式 - CTM 微信公眾號 - CTM 網上服務 www.ctm.net  
 - 澳門電訊門市 - 服務第一熱線：1000

Welcome to  
the New Era of **5G**  
Unlock the New Angle  
First to Start in Macau  
Tariff Guide

**CTM5G** Unlimited Data Usage

5G Local Monthly Plan <sup>®</sup>	\$178	\$238	\$338	\$438
FREE Local Data	Unlimited			
Full Speed Data	15GB	30GB	60GB	100GB
FREE Local Voice Airtime (Minute)	500		1,000	
Thereafter Charge Of Local Voice Airtime (Minute)	\$0.25			
FREE Local SMS	100			
Thereafter Charge Of Local SMS / MMS Charge (each)	\$0.25			
FREE CTM Wi-Fi	Unlimited			
FREE Value-added Services	- Caller's Line Identification - Supplementary Services*			

5G Mainland China, Macau & HK Monthly Plan <sup>®</sup>	\$368	\$468	\$568	\$668	\$868
FREE Shared 3-Destinations Data	Unlimited				
Full Speed Data	30GB	60GB	100GB	150GB	300GB
FREE Shared 3-Destinations Voice Airtime (Minute)	500	500	1,000	1,000	1,000
Thereafter Charge Of Shared 3-Destinations Voice Airtime (Minute)	\$0.25				
FREE Shared 3-Destinations SMS	100				
Thereafter Charge Of Shared 3-Destinations SMS / MMS Charge (each)	\$0.25				
FREE CTM Wi-Fi	Unlimited				
FREE Value-added Services	- Caller's Line Identification - Supplementary Services*				

5G EXTRA Monthly Full Speed Data Plan	\$50
Full Speed Data	10GB

5G Once-off Full Speed Data Plan	\$13	\$120	\$300
Full Speed Data (valid until the end of current bill cycle)	1GB	10GB	30GB

<sup>®</sup> This is "limited speed; unlimited volume" monthly plan. During the bill month, once the accumulated local data usage of a customer exceeds the FREE Full Speed Data, the data transmission speed (upload and download) will automatically be adjusted to no less than 1Mbps. The actual data transmission speed may vary due to various conditions such as the current network connection, the location, the device used, the number of concurrent users, the visited website(s) or other factors.

<sup>\*</sup> Supplementary Services include Call Forwarding, Call Waiting and Call Barring. These services are only activated upon customer's request.

<sup>^</sup> The "5G Upgrade Plan" is not applicable to 4G+ Unlimited Data Usage Plan Customers. With this service subscription, system will send out SMS reminder automatically when the remaining data entitlement reaches 2GB, 1GB and 100MB. After the data entitlement are consumed, another SMS reminder will be sent and the thereafter additional data consumption will be charged at \$0.012695 / MB. The default increment is 1MB therefore customers will be charged 1MB even if they use less. A ceiling charge of \$600 is applicable to local data thereafter charge only (except Data Package Plan monthly service charge, CTM Wi-Fi Usage & Roaming related data charges). When the ceiling charge is reached, the data access speed will be automatically adjusted to no less than 1Mbps. The local data usage of "Once-off Data Usage Plan" will be charged first, followed by the "EXTRA Monthly Data Usage Plan" and finally the "Basic Monthly Plan".

Notes:

- The "Full Speed Data" of "Once-off Full Speed Data Plan" will be charged first, followed by the "EXTRA Monthly Full Speed Data Plan" and finally the "Basic Monthly Plan".
- The activation time of "Mainland China, Macau & Hong Kong Monthly Plan" is after 8pm of the following day. Customers are required to select "China Mobile HK", "CSL", "SmarTone HK" or 3 Hong Kong as the mobile service operator when they are traveling in Hong Kong, as well as select "China Mobile" or "China Unicom" as the mobile service operator when travelling in Mainland China. The data used in related regions will be counted as free shared data and will not be included in any of the Roaming Data Package service. (Highly recommended for customers to select the network "manually" at handset device, otherwise, additional roaming data usage will be charged based on the charging scheme of the selected roaming network operators.)
- When customers use mobile data service via mobile devices, which is equivalent to use free data or the remaining balance. Therefore, when checking on the remaining data usage or balance, the displayed information will be different from the actual, and the data usage or balance in use are not included in the current information.
- \$1 is charged per international SMS sent; \$3 is charged per international MMS sent. A SMS should be less than or equal to 70 non-English / 160 English characters, when the SMS is more than 70 non-English / 160 English characters, it will be split into multiple SMS.
- To resend the Wi-Fi Password: customers can resend the Wi-Fi Password through the No.1 Hotline: 1000 or CTM Buddy App. To change the Wi-Fi Password: customers can change it through CTM Buddy App.
- According to Article 2(2) of Administrative Regulation No. 15 / 2002 on the Management and Allocation of Telecommunications Numbering Resources, numbering resources are non-transferable and therefore mobile number transfer services cannot be provided.
- The service is based on CTM Acceptable Use Policy "AUP".
- All prices are in MOP.

5G Upgrade Plan <sup>*</sup>	\$88/Month
Extra Usage Charge ( per GB)	\$13

5G Extra Monthly Data Usage Plan	\$50
Free Local Data Usage	10GB

5G Once-off Data Usage Plan	\$13	\$120	\$300
Free Local Data Usage (valid until the end of current bill cycle)	1GB	10GB	30GB

Deposits

Type of Service	Macau Resident	Non-Macau Resident
Local Telephone Service	-	\$500
IDD Service / Automatic International Roaming Service	\$500	\$1,000

Note: When customer terminates the service, deposit will be refunded after all outstanding bill payment are settled.

Other Service Charges

SIM Card	\$150
- 1st activation	FREE
- 1st time lost SIM card replacement (each year) <sup>*</sup>	\$50
- Thereafter lost SIM card replacement	
Change of service package plan	FREE
Change of Mobile No. <sup>*</sup>	\$25
Service Suspension <sup>**</sup> (each year)	\$30
Detailed Mobile Bill (each bill)	\$20
Service Reconnection	\$80
Special Mobile Number <sup>***</sup>	\$2,000

<sup>\*</sup> The "throughout the year" is effective from 1 January to 31 December of the current year.

<sup>\*\*</sup> Customers may apply for multiple requests of Temporary Service Suspension throughout the year, however, a maximum days of accumulated Temporary Service Suspension is 90 days per year. For Temporary Service Suspension requests that are within 90 days period, monthly service charge will not be levied. Otherwise, customers are liable to normal monthly service charge thereafter.

<sup>\*\*\*</sup> Customers who had previously terminated their mobile service and later request for service reversion of the same Mobile No. is required to pay for the Special Mobile No. fee of \$2,000 on a per transaction basis.

Channels for changing the Mobile Service Plan :

- CTM Buddy App
- CTM WeChat
- CTM eServices at [www.ctm.net](http://www.ctm.net)
- CTM Shops
- No.1 Hotline: 1000



## 收費指南



4G+ 基本月費計劃	\$98	\$198	\$298	\$398	\$498	\$598	\$888
每月總免費話音通話時間 <sup>◎</sup> (分鐘)	300	1,000	1,600	2,200	3,000	3,600	5,000
• 每月免費「自己人」話音通話時間 (分鐘)	100	200	400	400	600	600	1,000
• 每月免費基本話音通話時間 (分鐘)	200	800	1,200	1,800	2,400	3,000	4,000
額外本地話音通話收費 (每分鐘 / 澳門幣)	\$0.25	\$0.25	\$0.25	\$0.25	\$0.25	\$0.25	\$0.25
免費本地數據用量	100MB	512MB	1GB	2.5GB	5GB	8GB	限速 不限量 <sup>ⓐ</sup>
額外用量收費 (每MB / 澳門幣)	\$0.25	\$0.25	\$0.25	\$0.25	\$0.25	\$0.25	
本地流動數據用量收費上限 <sup>※</sup> (澳門幣)	\$500						/
免費 CTM Wi-Fi 用量 (小時)	100	100	200	200	300	300	無限
額外用量收費 (每小時 / 澳門幣)	\$6	\$6	\$6	\$6	\$6	\$6	
每月總免費中、港IDD 通話時間 (分鐘)	0	50	80	100	150	200	500
每月免費本地短訊	0	100	150	200	250	300	500
額外本地短訊 / 多媒體訊息收費 (每個 / 澳門幣)	\$0.25	\$0.25	\$0.25	\$0.25	\$0.25	\$0.25	\$0.25
免費增值服務	1 - 6			1 - 7			

4G+ 數據月費計劃	\$150	\$270	\$350	\$430	\$500
每月總免費話音通話時間 <sup>◎</sup> (分鐘)	100	100	200	250	200
額外話音通話收費 (每分鐘 / 澳門幣)	\$0.25	\$0.25	\$0.25	\$0.25	\$0.25
免費本地數據用量	500MB	1.5GB	3GB	5GB	限速 不限量 <sup>ⓐ</sup>
額外用量收費 (每MB / 澳門幣)	\$0.25	\$0.25	\$0.25	\$0.25	
本地流動數據用量收費上限 <sup>※</sup> (澳門幣)	\$500				
免費 CTM Wi-Fi 用量 (小時)	80	80	300	400	50
額外用量收費 (每小時)	\$6	\$6	\$6	\$6	\$6
額外本地短訊 / 多媒體訊息收費 (每個 / 澳門幣)	\$0.25	\$0.25	\$0.25	\$0.25	\$0.25
免費增值服務	1, 2, 4, 6				

免費增值服務：1. 首 6 秒免費接聽優惠<sup>●</sup>      2. 生日大曬任用優惠<sup>▼</sup>      3. 來電號碼顯示服務      4. 特備功能服務<sup>\*</sup>  
5. 留言信箱<sup>†</sup> / 「冇用 call」<sup>†</sup>      6. 本地 VoLTE 話音服務      7. 豁免 IDD 本地通話費

<sup>◎</sup> 先扣除每月免費「自己人」通話時間，後扣除每月免費基本通話時間。<sup>ⓐ</sup> 於發單月內，當客戶所使用之累積本地流動數據用量超過上限 10GB，數據傳輸速度 (上載及下載) 將被限制至不低於 256kbps。  
<sup>※</sup> 本地流動數據用量收費上限為 \$500，並只適用於本地流動數據額外用量收費 (流動數據服務月費及 CTM Wi-Fi 用量除外)。當觸及此收費上限時，數據傳輸速度將被限制至不少於 256kbps。<sup>●</sup> 只適用於本地話音及視像通話時間。<sup>▼</sup> 只適用於本地話音 / 本地視像通話 / 本地短訊 / 本地流動數據用量及以個人名義登記之流動電話賬戶。<sup>\*</sup> 特備功能服務包括：所有來電轉線服務，來電待接服務及所有來電上鎖。<sup>†</sup> 客戶需另行登記。

註：「自己人」即 CTM 流動電話月費客戶間之網內撥出及接收的話音通話 / 視像通話 / 短訊及多媒體訊息。實際數據傳輸速度將因應當時的網絡情況、電腦硬件、軟件配合、同時共用人數、地點、使用中之軟件數量、網頁本身之速度及其他因素而有所偏差。致電往中國及香港 IDD (00 / 01) 額外收費將適用於中國及香港標準的 IDD (00 / 01) 收費。IDD 國際長途電話是以每 6 秒為收費單位。致電 IDD 國際長途電話，除 IDD 通話費外，客戶仍須扣除本地話音通話時間。而本地話音通話時間是按客戶所選用之月費計劃而定。有關漫遊視像通話費、IDD 直通國際長途視像通話費及以上服務之最新收費，請瀏覽 CTM 網上服務 (www.ctm.net)。除無限數據月費計劃外，所有 4G+ 收費計劃的本地數據用量及 4G+ 漫遊數據額外組合收費均預設為「先購買後使用」。「三地漫遊數據共享」是指本地 (CTM)、香港 (「中國移動香港」、「CSL」、「SmarTone HK」或「3 Hong Kong」) 及中國內地 (中國移動及中國聯通) 之間的數據共享。所有提及之目的及營運商會因將來發展而有所變更。當「可用免費本地流動數據」用量只剩餘 1GB、500MB 及 50MB 時，客戶將收到用量短訊提示。另外，若客戶已沒有免費流動數據用量時，本地 / 漫遊數據服務將被暫時上鎖直至客戶自行購買額外的本地 / 漫遊數據用量或自行解鎖並按每 KB 收費。國際短訊每個為 \$1，國際多媒體訊息每個為 \$3。本地流動數據額外用量收費為每 KB \$0.000244。於海外使用漫遊數據服務時，客戶需額外繳付根據當地流動通訊網絡商之漫遊數據收費模式之費用。本地數據用量的計費次序為：先計按次性收費計劃，然後額外月費組合，最後為基本月費計劃之用量。當同時申請「15日數據漫遊組合 (2GB)」和開啟「漫遊數據自動按日收費組合」時，所使用數據將優先計入「15日數據漫遊組合 (2GB)」服務。CTM Wi-Fi 額外用量收費為每分鐘 \$0.1；重發 Wi-Fi 密碼；客戶可透過服務第一熱線 1000 或 CTM Buddy 手機程式。更改 Wi-Fi 密碼；客戶可透過 CTM Buddy 手機程式。根據第 15 / 2002 號行政法規《電信號碼資源的管理及分配》第二條第二款的規定，碼號資源屬不可轉移的資源，因此無法提供流動電話號碼轉名服務。以 CTM 的可接受使用政策 (AUP) 為準。所有價格以澳門幣計算。



4G+ 附加本地數據組合計劃	\$23	\$150	\$280	\$370
免費本地數據用量	100MB	1GB	2GB	4GB
免費 CTM Wi-Fi 用量 (小時)	0	0	無限	無限

4G+ 按次收費數據計劃	\$100	\$160
免費本地數據用量 (有效期至當月賬單截數日)	500MB	1GB

### 按金

服務類別	本澳居民 (澳門幣)	非本澳居民 (澳門幣)
本地電話服務	-	\$500
IDD 直通國際長途電話服務、國際自動跨境通訊服務及中國自動跨境通訊服務	\$500	\$1,000

註：所有按金將於客戶取消服務並已繳清所有有關費用時原銀奉還。

### 其他服務收費

	澳門幣
智能卡 - 首次啟動 / 更換智能卡	\$150
- 首次遺失補發 (每一年內) <sup>#</sup>	免費
- 再次遺失補發	\$50
更改服務計劃	免費
更改電話號碼 <sup>*</sup>	\$25
暫停服務手續費 <sup>**</sup> (每次)	\$30
流動電話詳細賬單 (每份)	\$20
重新接駁	\$80
特別電話號碼 <sup>#</sup>	\$2,000

<sup>#</sup> 「一年內」之計算方法是以每年 1 月 1 日至 12 月 31 日。

<sup>\*\*</sup> 由第一次暫停流動電話服務申請日起計之一年內，客戶可一次或多次申請重開或暫時停止使用服務，倘若要求暫停服務之合共日數相等或少於 90 日，其所選之服務計劃月費將暫停收取。倘若要求暫停服務之合共日數多於 90 日，則其後之時間仍需繳付其所選之服務計劃月費。

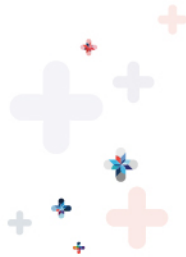
<sup>###</sup> 其客戶如選用同一的特別電話號碼來重開流動電話，需重新繳付 \$2,000 之特別電話號碼費用。

申請更改流動電話服務計劃的途徑：

- CTM Buddy 應用程式
- CTM 微信公眾號
- CTM 網上服務 www.ctm.net
- 澳門電訊門市
- 服務第一熱線：1000



# Tariff Guide



4G Basic Monthly Plan	\$98	\$198	\$298	\$398	\$498	\$598	\$888
Free Total Monthly Voice Airtime <sup>Ⓞ</sup> (Minute)	300	1,000	1,600	2,200	3,000	3,600	5,000
• Free "CTM Buddy" Monthly Voice Airtime (Minute)	100	200	400	400	600	600	1,000
• Free Basic Monthly Voice Airtime (Minute)	200	800	1,200	1,800	2,400	3,000	4,000
Thereafter Charge Of Local Voice Airtime (Minute / MOP)	\$0.25	\$0.25	\$0.25	\$0.25	\$0.25	\$0.25	\$0.25
Free Local Data Usage	100MB	512MB	1GB	2.5GB	5GB	8GB	Limited Speed; Unlimited Volume <sup>Ⓢ</sup>
Thereafter Charge (MB / MOP)	\$0.25	\$0.25	\$0.25	\$0.25	\$0.25	\$0.25	
Local Data Usage Ceiling Charge* (MOP)	\$500						/
Free CTM Wi-Fi Usage (Hour)	100	100	200	200	300	300	Unlimited
Thereafter Charge (Hour / MOP)	\$6	\$6	\$6	\$6	\$6	\$6	
Free Total China & H.K. IDD Monthly Airtime (Minute)	0	50	80	100	150	200	500
Free Monthly Local SMS	0	100	150	200	250	300	500
Thereafter Charge Of Local SMS / MMS (Message / MOP)	\$0.25	\$0.25	\$0.25	\$0.25	\$0.25	\$0.25	\$0.25
Free Value-added Services	1 - 6		1 - 7				

4G Data Monthly Plan	\$150	\$270	\$350	\$430	\$500
Free Total Monthly Voice Airtime <sup>Ⓞ</sup> (Minute)	100	100	200	250	200
Thereafter Charge Of Local Voice Airtime (Minute / MOP)	\$0.25	\$0.25	\$0.25	\$0.25	\$0.25
Free Local Data Usage	500MB	1.5GB	3GB	5GB	Limited Speed; Unlimited Volume <sup>Ⓢ</sup>
Thereafter Charge (MB / MOP)	\$0.25	\$0.25	\$0.25	\$0.25	
Local Data Usage Ceiling Charge* (MOP)	\$500				
Free CTM Wi-Fi Usage (Hour)	80	80	300	400	50
Thereafter Charge (Hour / MOP)	\$6	\$6	\$6	\$6	\$6
Thereafter Charge Of Local SMS / MMS (Message / MOP)	\$0.25	\$0.25	\$0.25	\$0.25	\$0.25
Free Value-added Services	1, 2, 4, 6				

- Free Value-added Services:
- Free First 6 Seconds Local Airtime<sup>Ⓢ</sup>
  - Free Birthday Usage Offer<sup>Ⓢ</sup>
  - Caller's Line Identification
  - Supplementary Services\*
  - Voice Mail<sup>†</sup> / Missed Call Alert<sup>†</sup>
  - Local VoLTE Voice Service
  - Waive Local IDD Airtime Charge

<sup>Ⓞ</sup> The Free\* CTM Buddy\* Monthly Airtime will be consumed first, followed by the Free Basic Monthly Airtime. <sup>Ⓢ</sup> During the bill month, once the accumulated local data usage of a customer exceeds more than 10GB, the data transmission speed (upload and download) will automatically be adjusted to not less than 256kbps. <sup>Ⓢ</sup> A ceiling charge of \$500 is applicable to local data thereafter charge only (except Data Package Plan monthly service charge, Wireless Broadband Wi-Fi and roaming related data charges). When the ceiling charge is reached, the data access speed will be automatically adjusted to not less than 256kbps. <sup>Ⓢ</sup> Only applicable to local voice and video airtime. <sup>Ⓢ</sup> Only applicable to local voice / local video airtime / local SMS / local mobile data usage, and mobile account that registered under personal name. <sup>Ⓢ</sup> Supplementary Services include Call Forwarding, Call Waiting and Call Barring. <sup>†</sup> Only activate upon customer's request.

Notes: "CTM Buddy" refers to voice & video calls, SMS and MMS that are made and sent between CTM Mobile Service postpaid customers. The actual data transmission speed may vary due to certain circumstances such as the current internet environment, the computer hardware used, software(s) installed and used, the number of concurrent users, the location, the speed of the website(s) or other factors. The thereafter charge of China & HK IDD (00/01) will apply the global IDD (00 / 01) rates to China & HK. IDD calls are charged per 6 secs. When making IDD calls, local airtime charge applies in addition to IDD charge, and the local airtime charge vary depending on selected service plan. For more details and tariff about the Roaming Service and the latest charges of our services, please refer to CTM eServices (www.ctm.net). "Paid then Use" is a default feature for all 4G+ monthly plans & 4G+ Roaming Data Extra Packages, except unlimited monthly rental plan. "Roaming Data Sharing Usage" which means the data sharing between local (CTM), H.K. (China Mobile HK, CSL, SmartOne HK & 3 Hong Kong) & Mainland China (China Unicom & China Mobile). The above destinations and operators may change due to future business development. When your available local data usage remains 1GB, 500MB and 50MB left in current billing month, an auto alert SMS will be sent to you as reminder. When you do not have any data usage, local data / roaming data will be barred until customer purchase additional local data / roaming data or unlock to pay per KB charge. \$1 is charged per international SMS sent; \$3 is charged per international MMS sent. Local Data additional usage is charged \$0.00244 per KB. While roaming, customer is required to pay for all the related data service roaming charges based on the individual charges of the roaming network operators. The Local Data Usage billing sequence will be first consume the data of "Once-off Data Package", then the "Local Data Package" and followed by the "Basic Monthly Plan". When applied the "15 Days Data Roaming Package (2GB)" & "Auto Daily Charge Roaming Data Package" at the same time, the roaming data will be priority used to "15 Days Data Roaming Package (2GB)" Service. CTM Wi-Fi additional usage is charged \$0.1 per minute. To resend the Wi-Fi Password: you can resend the Wi-Fi Password through the No.1 Hotline: 1000 or CTM Buddy App. To change the Wi-Fi Password: you can change it through CTM Buddy App. According to Article 2(2) of Administrative Regulation No. 15 / 2002 on the Management and Allocation of Telecommunications Numbering Resources, numbering resources are non-transferable and therefore mobile number transfer services cannot be provided. The service is based on CTM Acceptable Use Policy "AUP". All prices are in MOP.

4G Add on Local Data Packages	\$23	\$150	\$280	\$370
Free Local Data Usage	100MB	1GB	2GB	4GB
Free CTM Wi-Fi Usage (Hour)	0	0	Unlimited	Unlimited

4G Add on Once-Off Data Packages	\$100	\$160
Free Local Data Usage (Valid until billing cut off date)	500MB	1GB

## Deposits

Type of Services	Macau Resident (MOP)	Non-Macau Resident (MOP)
Local Telephone Service	-	\$500
IDD Service / Automatic International Roaming Service (includes China)	\$500	\$1,000

Note: When customer terminates the service, deposit will be refunded provided that all outstanding bill payment are settled.

## Other Service Charges

	MOP
<b>SIM Card</b>	
- 1st activation / SIM card replacement	\$150
- 1st time lost SIM card replacement (each year) <sup>#</sup>	FREE
- Thereafter lost SIM card replacement	\$50
Change of service package plan	FREE
Change of telephone number <sup>*</sup>	\$25
Service Suspension <sup>**</sup> (each year)	\$30
Detailed Mobile Bill (each bill)	\$20
Service Reconnection	\$80
Special Mobile Number <sup>##</sup>	\$2,000

<sup>#</sup> The "throughout the year" is effective from 1 January to 31 December of the current year.  
<sup>\*\*</sup> Customers may apply for multiple requests of Temporary Service Suspension throughout the year, however, a maximum days of accumulated Temporary Service Suspension is 90 days per year. For Temporary Service Suspension requests that are within 90 days period, monthly service charge will not be levied. Otherwise, customers are liable to normal monthly service charge thereafter.  
<sup>##</sup> Customers who had previously terminated their mobile service and later request for service reversion of the same mobile number are required to pay the Special Mobile Number fee of MOP2,000 on a per transaction basis.

Channels for changing the Mobile Service Plan :  
 - CTM Buddy App - CTM WeChat - CTM eServices at [www.ctm.net](http://www.ctm.net)  
 - CTM Shops - No.1 Hotline: 1000